

SAKATO

Product Catalogue



Company profile

SAKATO MARKETING SDN BHD started its operation in 2006. Since then, **SAKATO** has emerged as one of the fastest growing companies in the refrigerator industry.

Besides operating as an importer and distributor of various types of chillers and freezers for both commercial and household use, we have established ourselves as one of the most comprehensive and trusted companies with its expertise in offering a wide range of innovative high quality Commercial Refrigerator, Open Showcase, Island Freezer, Confectionery Showcase, Ice Cream Showcase, and other types of equipment.

Apart from being an equipment supplier, we also provide advice to our customers in the area of design and installation of equipment according to their requirement. We have undertaken projects for chain convenience stores, retailers/wholesalers (of frozen food, beverage, and etc), restaurant, government agencies and other establishments.

Driven by our persistent efforts in providing the best solution for our customers, we have built a team of experience sales personnel and well train technicians who are ready to provide after sales service throughout Peninsular Malaysia.

We also have a policy of providing to our customers value added services such as free consultation, advice on design and overall support.

SAKATO is committed to constantly upgrade and improve its products in line with the latest trend and technology.

SAKATO Single Door Chest Freezer

Main Feature:

- Use high efficiency compressor (deep & quick freezing)
- 2 in 1 Dual convertible temperature function
- Low energy consumption
- Environment friendly refrigeration
- Durable epoxy inner body
- Lock & Keys
- Fine foam technology



Energy Saving



Low Noise



Quick Cooling



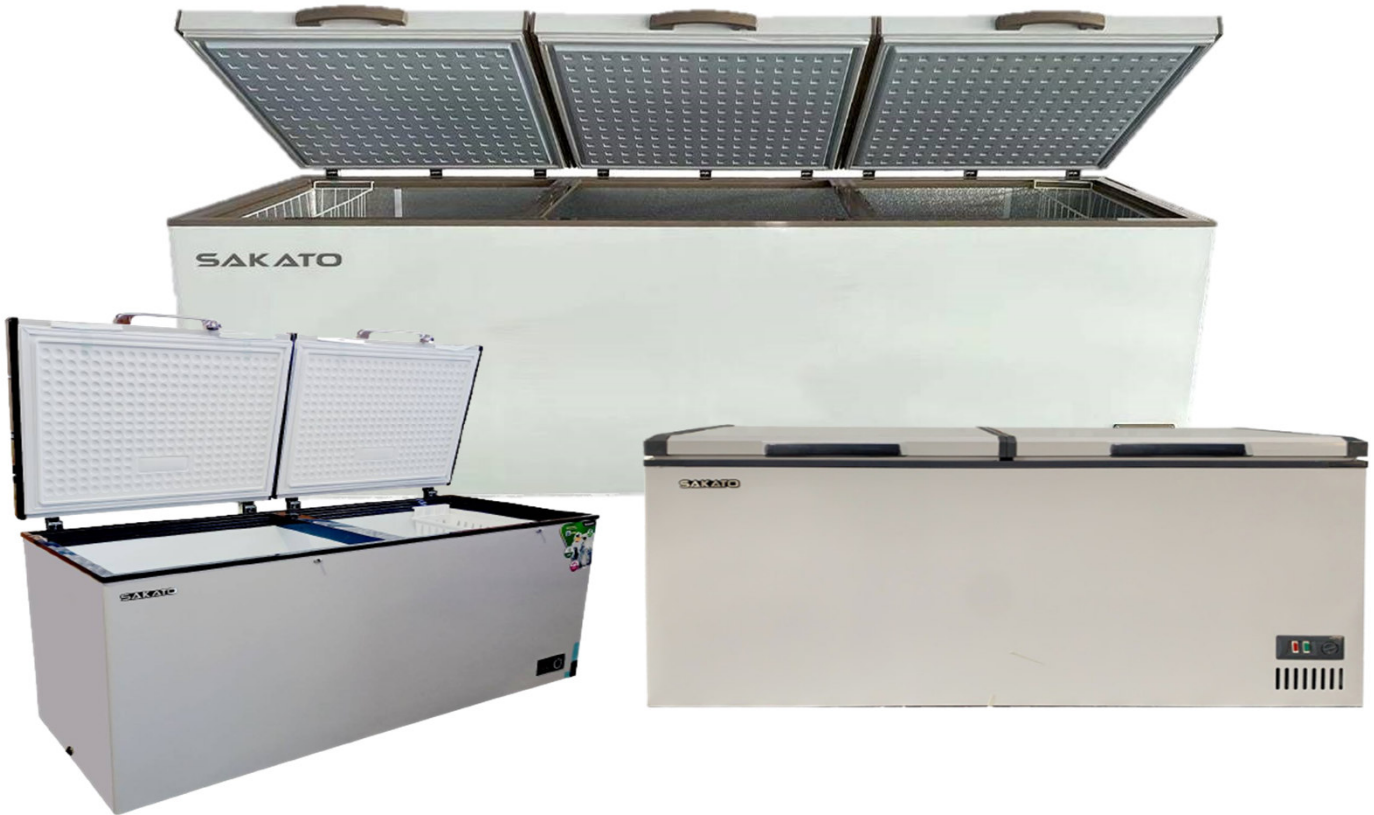
Low Maintenance

Model	Capacity (L)	Temp (°C)	Refrigeration	Cooling System	Dimension
					W x D x H
SF – 118 – S	100 L	+8°C ~ -20°C	R600a	Direct Cool	21.00" x 20.25" x 32.25"
					535mm X 515mm X 820mm
SF – 238 – C	210 L	+8°C ~ -20°C	R600a	Direct Cool	35.60" x 22.00" x 32.70"
					905mm X 560mm X 830mm
SF – 338 – C	327 L	+8°C ~ -20°C	R600a	Direct Cool	43.50" x 26.40" x 32.70"
					1104mm X 670mm X 830mm
SF – 448 – SH	410 L	+8°C ~ -20°C	R134a	Direct Cool	51.00" x 25.00" x 33.00"
					1295mm X 640mm X 840mm

SAKATO Solid Double Door Chest Freezer

Main Feature:

- Use high efficiency compressor (deep & quick freezing)
- Low energy consumption
- Low maintenance condenser
- Environment friendly refrigeration
- Lock & Keys
- Fine foam technology
- Durable epoxy inner body



Energy Saving



Low Noise



Quick Cooling



Low Maintenance

Model	Capacity (L)	Temp (°C)	Refrigeration	Cooling System	Dimension
					W x D x H
SF – 660 – DC	600 L	0°C ~ -22°C	R290	Direct Cool	70.85" x 30.00" x 32.70"
					1800mm x 760mm x 830mm
SF – 990 – DQ	950 L	0°C ~ -22°C	R290	Direct Cool	86.60" x 32.85" x 33.50"
					2200mm x 835mm x 850mm
SF – 1380 – DQ	1200 L	0°C ~ -22°C	R290	Direct Cool	98.40" x 39.40" x 33.50"
					2500mm x 1000mm x 850mm
SF – 2180 – DQ	2000 L	0°C ~ -22°C	R290	Direct Cool	122.00" x 34.80" x 35.40"
					3100mm x 885mm x 900mm

SAKATO Curved Glass Door Freezer

Main Feature:

- Use high efficiency compressor (quick cooling, less heat & energy saving)
- 70mm thickness insulation (to optimize cooling performance & energy saving)
- New style curved sliding Low-E glass lids
- Interior LED light
- Full baskets
- New elegant design
- Environmentally friendly
- Four caster wheels
- Temperature indicator

* Optional:

- ~ Sticker printing and installation
- ~ Back panel signboard (LED lights)



Model	Capacity (L)	Temp (°C)	Refrigeration	No. of basket	Cooling System	Dimension
						W x D x H
SCG – 265	250 L	0°C ~ -20°C	R290	2	Direct Cool	29.00" x 26.80" x 33.50"
						740mm x 680mm x 850mm
SCG – 375	350 L	0°C ~ -20°C	R290	3	Direct Cool	40.60" x 26.80" x 33.50"
						1030mm x 680mm x 850mm
SCG – 475	450 L	0°C ~ -20°C	R290	4	Direct Cool	50.00" x 26.80" x 33.50"
						1270mm x 680mm x 850mm
SCG – 605	550 L	0°C ~ -20°C	R290	5	Direct Cool	60.20" x 26.80" x 33.50"
						1530mm x 680mm x 850mm
SCG – 745	650 L	0°C ~ -20°C	R290	6	Direct Cool	71.25" x 26.80" x 33.50"
						1810mm x 680mm x 850mm

SAKATO Sliding Glass Door Freezer

Main Feature:

- Use high efficiency compressor (quick cooling, less heat & energy saving)
- New style curved slanding Low-E glass lids
- New elegant design
- Interior LED light
- Full baskets
- Environment friendly
- Four caster wheels
- Temperature indicator
- Dual function



Energy Saving



Low Noise



Quick Cooling



Low Maintenance

Model	Capacity (L)	Temp (°C)	Refrigeration	No. of shelf	Cooling System	Dimension
						W x D x H
SCG – 198	156 L	+8°C ~ -20°C	R600a	2	Direct Cool	2.00" x 2.16" x 2.95"
						610mm x 600mm x 900mm
SSG – 360	336 L	+8°C ~ -20°C	R290	3	Direct Cool	40.75" x 26.00" x 35.40"
						1035mm x 660mm x 900mm
SSG – 600	516 L	+8°C ~ -20°C	R290	5	Direct Cool	64.40" x 26.00" x 35.40"
						1635mm x 660mm x 900mm
SSG – 700	585 L	+8°C ~ -20°C	R290	6	Direct Cool	71.85" x 26.00" x 35.40"
						1825mm x 660mm x 900mm

SAKATO Table Top Cooler

Main Feature:

- Use high efficiency compressor (quick cooling, less heat & energy saving)
- Double layer Low-E tempered glass door
- Frost free system
- Low maintenance condenser
- Self evaporating drip tray
- Interior LED lights
- Locks & keys
- Adjustable shelves



Energy Saving



Low Noise



Quick Cooling



Low Maintenance

Model	Capacity (L)	Temp (°C)	Refrigeration	No. of shelf	Cooling System	Dimension
						W x D x H
SC – 120C	120 L	+2°C ~ +8°C	R600a	2	Frost Free	21.50" x 23.00" x 33.00"
						545mm x 588mm x 837mm
SC – 120CL	120 L	+2°C ~ +8°C	R600a	2	Frost Free	21.50" x 23.00" x 39.25"
						545mm x 588mm x 997mm

SAKATO Single Door Upright Chiller

Main Feature:

- Energy saving
- Double layer glass door
- Low maintenance condenser
- Self evaporating drip tray
- Easy to clean interior
- Interior LED lights
- Interior fan
- Adjustable shelves



SC-248-DX
(Cooling Plate System)



SC-298-FW
(Frost Free System)



Energy Saving



Low Noise



Quick Cooling



Low Maintenance

Model	Capacity (L)	Temp (°C)	Refrigeration	No. of shelf	Cooling System	Dimension
						W x D x H
SC – 248 – DX	220 L	+2°C ~ +10°C	R600a	4	Cooling Plate	20.85" x 21.70" x 61.00"
						530mm x 550mm x 1550mm
SC – 298 – FW	280 L	+2°C ~ +10°C	R600a	4	Frost Free	23.40" x 21.70" x 67.00"
						595mm x 550mm x 1700mm

SAKATO Single Door Upright Chiller (Heater Door)

Main Feature:

- Use high efficiency compressor (quick cooling, less heat & energy saving)
- Double layer Low-E tempered heater glass door
- Frost free system
- Low maintenance condenser
- Self evaporating drip tray
- Digital controller
- Interior LED lights
- Lock & keys
- Door hinge (self-closing)
- Adjustable shelves



Energy Saving



Low Noise



Quick Cooling



Low Maintenance

Model	Capacity (L)	Temp (°C)	Refrigeration	No. of shelf	Cooling System	Dimension
						W x D x H
SC – 338 – FH	300 L	+2°C ~ +10°C	R600a	4	Frost Free	22.80" x 21.80" x 74.80"
						580mm x 580mm x 1900mm
SC – 388 – FT	350 L	+2°C ~ +10°C	R600a	5	Frost Free	26.80" x 22.80" x 72.5"
						680mm x 580mm x 1840mm
SC – 408 – FH	400 L	+2°C ~ +10°C	R600a	5	Frost Free	26.80" x 26.00" x 78.00"
						680mm x 660mm x 1980mm

SAKATO 2 & 3 Door Upright Chiller (Top Compressor)

Main Feature:

- Use high efficiency compressor (quick cooling, less heat & energy saving)
- Double layer Low-E tempered heater glass door
- Frost free system
- Low maintenance condenser
- Self evaporating drip tray
- Digital controller
- Interior LED lights
- Lock & keys
- Door hinge (self-closing)
- Adjustable shelves



Energy Saving



Low Noise



Quick Cooling



Low Maintenance

Model	Capacity (L)	Temp (°C)	Refrigeration	No. of shelf	Cooling System	Dimension
						W x D x H
SC – D2 – 1050 TCH	800 L	+2°C ~ +10°C	R290	8	Frost Free	41.30" x 24.80" x 81.00"
						1050mm x 630mm x 2060mm
SC – D2 – 1295 TCH	1000 L	+2°C ~ +10°C	R290	8	Frost Free	47.80" x 28.75" x 81.00"
						1215mm x 730mm x 2060mm
SC – D3 – 1830 TCH	1500 L	+2°C ~ +10°C	R290	12	Frost Free	72.00" x 28.75" x 81.00"
						1830mm x 730mm x 2060mm

SAKATO 2 & 3 Door Upright Chiller (LX Series)

Main Feature:

- Use high efficiency compressor (quick cooling, less heat & energy saving)
- New elegant design
- Double layer Low-E tempered heater glass door
- Low maintenance condenser
- Self evaporating drip tray
- Digital controller
- Aluminium door frame and handle
- Interior LED lights
- Lock & keys
- Door hinge (self-closing)
- Adjustable shelves



Energy Saving



Low Noise



Quick Cooling



Low Maintenance

Model	Capacity (L)	Temp (°C)	Refrigeration	No. of shelf	Cooling System	Dimension
						W x D x H
SC – D2 – 1280 LXB	1100 L	+2°C ~ +10°C	R290	10	Frost Free	47.80" x 28.70" x 81.00"
SC – D2 – 1280 LXS						1215mm x 730mm x 2060mm
SC – D3 – 1880 LXB	1600 L	+2°C ~ +10°C	R290	15	Frost Free	72.00" x 28.70" x 81.00"
SC – D3 – 1880 LXS						1830mm x 730mm x 2060mm

SAKATO 2, 3 & 4 Door Upright Freezer (Down Compressor)

Main Feature:

- New elegant design with bigger display space
- Use high efficiency compressor (quick cooling, less heat & energy saving)
- Trip layer Low-E tempered heater glass door
- Frost free system
- Low maintenance condenser
- Self evaporating drip tray
- Digital controller
- Interior LED lights
- Lock & keys
- Door hinge (self-closing)
- Adjustable shelves



Energy Saving



Low Noise



Quick Cooling



Low Maintenance

Model	Capacity (L)	Temp (°C)	Refrigeration	No. of shelf	Cooling System	Dimension
						W x D x H
SUF – D2 – 1260 DC (BLK / SIL)	1000 L	0°C ~ -22°C	R290	10	Frost Free	49.60" x 30.70" x 82.70"
						1260mm x 780mm x 2100mm
SUF – D3 – 1860 DC (BLK / SIL)	1500 L	0°C ~ -22°C	R290	15	Frost Free	73.20" x 30.70" x 82.70"
						1860mm x 780mm x 2100mm
SUF – D4 – 2460 DC (BLK / SIL)	2000 L	0°C ~ -22°C	R290	20	Frost Free	96.85" x 30.70" x 82.70"
						2460mm x 780mm x 2100mm

SAKATO 2, 3 & 4 Door Upright Freezer

Main Feature:

- New elegant design with bigger display space
- Use high efficiency compressor (quick cooling, less heat & energy saving)
- Frost free system
- Low maintenance condenser
- Self evaporating drip tray
- Digital controller
- Interior LED lights
- Door hinge (self-closing)
- Adjustable shelves



Energy Saving



Low Noise



Quick Cooling



Low Maintenance

Model	Capacity (L)	Temp (°C)	Refrigeration	No. of shelf	Cooling System	Dimension
						W x D x H
SUF – D2 – 1260 TC (BLK / SIL)	1000 L	0°C ~ -22°C	R290	10	Frost Free	49.60" x 30.70" x 82.70"
						1260mm x 780mm x 2100mm
SUF – D3 – 1860 TC (BLK / SIL)	1500 L	0°C ~ -22°C	R290	15	Frost Free	73.20" x 30.70" x 82.70"
						1860mm x 780mm x 2100mm
SUF – D4 – 2460 TC (BLK / SIL)	2000 L	0°C ~ -22°C	R290	20	Frost Free	96.90" x 30.70" x 82.70"
						2460mm x 780mm x 2100mm
SUF – D2 – 1260 FG (BLK / SIL)	1200 L	0°C ~ -22°C	R290	10	Frost Free	49.60" x 29.50" x 82.70"
						1260mm x 750mm x 2100mm
SUF – D3 – 1860 FG (BLK / SIL)	1800L	0°C ~ -22°C	R290	15	Frost Free	73.20" x 29.50" x 82.70"
						1860mm x 750mm x 2100mm
SUF – D4 – 2460 FG (BLK / SIL)	2500L	0°C ~ -22°C	R290	20	Frost Free	96.85" x 29.50" x 82.70"
						2460mm x 750mm x 2100mm

SAKATO 1 & 2 Door Upright Chiller (Full Glass)

Main Feature:

- New elegant design with full glass panel
- Use high efficiency compressor (quick cooling, less heat & energy saving)
- Frost free system
- Low maintenance condenser
- Self evaporating drip tray
- Digital controller
- Interior LED lights
- Door hinge (self-closing)
- Adjustable shelves



Energy Saving



Low Noise



Quick Cooling



Low Maintenance

Model	Temp (°C)	Refrigeration	No. of shelf	Cooling System	Dimension
					W x D x H
SUC – 680 FG	1°C ~ 10°C	R290	5	Frost Free	26.77" x 23.62" x 77.95"
					680mm x 600mm x 1980mm
SUC – D2 – 1180 FG	1°C ~ 10°C	R290	10	Frost Free	46.45" x 23.62" x 77.95"
					1180mm x 600mm x 1980mm
SUC – D3 – 1860 FG	1°C ~ 10°C	R290	15	Frost Free	73.22" x 24.40" x 77.95"
					1860mm x 620mm x 1980mm

SAKATO Premium Upright Chiller (8 Feet Height)

Main Feature:

- New elegant design with bigger display space
- Use high efficiency compressor (quick cooling, less heat & energy saving)
- Frost free system
- Low maintenance condenser
- Self evaporating drip tray
- Digital controller
- Interior LED lights
- Door hinge (self-closing)
- Adjustable shelves



Energy Saving



Low Noise



Quick Cooling



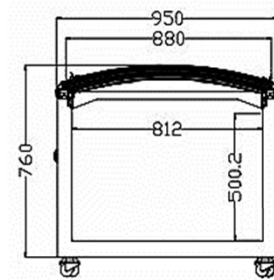
Low Maintenance

Model	Capacity (L)	Temp (°C)	Refrigeration	No. of shelf	Cooling System	Dimension
						W x D x H
SC – D2 – 1260 – TCP (BLK / SIL)	1300 L	+1°C ~ +10°C	R290	12	Blower System	49.60" x 29.50" x 94.50"
						1260mm x 750mm x 2400mm
SC – D3 – 1860 – TCP (BLK / SIL)	1700 L	+1°C ~ +10°C	R290	18	Blower System	73.20" x 29.50" x 94.50"
						1860mm x 750mm x 2400mm

SAKATO Combined Island Freezer Showcase (Double Circular Arc)

Main Feature:

- Use high efficiency compressor (quick cooling, less heat & energy saving)
- Top curved sliding Low-E glass door
- Interior LED light to improve visibility
- Condenser with fan
- Front side protection pole
- Auto defrost system
- Italian brand digital thermostat
- Self evaporating drip tray
- Full baskets with divider



Energy Saving



Low Noise



Quick Cooling



Low Maintenance

Model	Capacity (L)	Temp (°C)	Refrigeration	Cooling System	Dimension
					W x D x H
SDC – 780R	850 L	-18°C ~ -22°C	R290	Auto Defrost	74.80" x 38.60" x 32.85"
					1900mm x 980mm x 835mm

SAKATO Combined Island Freezer Showcase (Auto Defrost) (-22°C Ultra Cool)

Main Feature:

- Use high efficiency imported compressor (quick cooling, less heat & energy saving)
- Sliding tempered Low-E glass door (left to right)
- New big handle design and easy for door moving
- Interior LED light to improve visibility
- Thickness body 85mm, 40% energy saving
- New glass door design more display space
- Auto defrost system
- Self evaporating drip tray
- Digital controller

* Optional:

~ Display racking



Energy Saving



Low Noise



Quick Cooling



Low Maintenance

Model	Capacity (L)	Temp (°C)	Refrigeration	Cooling System	Dimension
					W x D x H
SCQH – 150D	650 L	-18°C ~ -22°C	R290	Auto Defrost	59.60" x 35.40" x 33.70"
					1515mm x 900mm x 855mm
SCQH – 190D	800 L	-18°C ~ -22°C	R290	Auto Defrost	75.00" x 35.40" x 33.70"
					1905mm x 900mm x 855mm
SCQH – 220L	1050 L	-18°C ~ -22°C	R290	Auto Defrost	86.80" x 35.40" x 36.80"
					2205mm x 900mm x 935mm

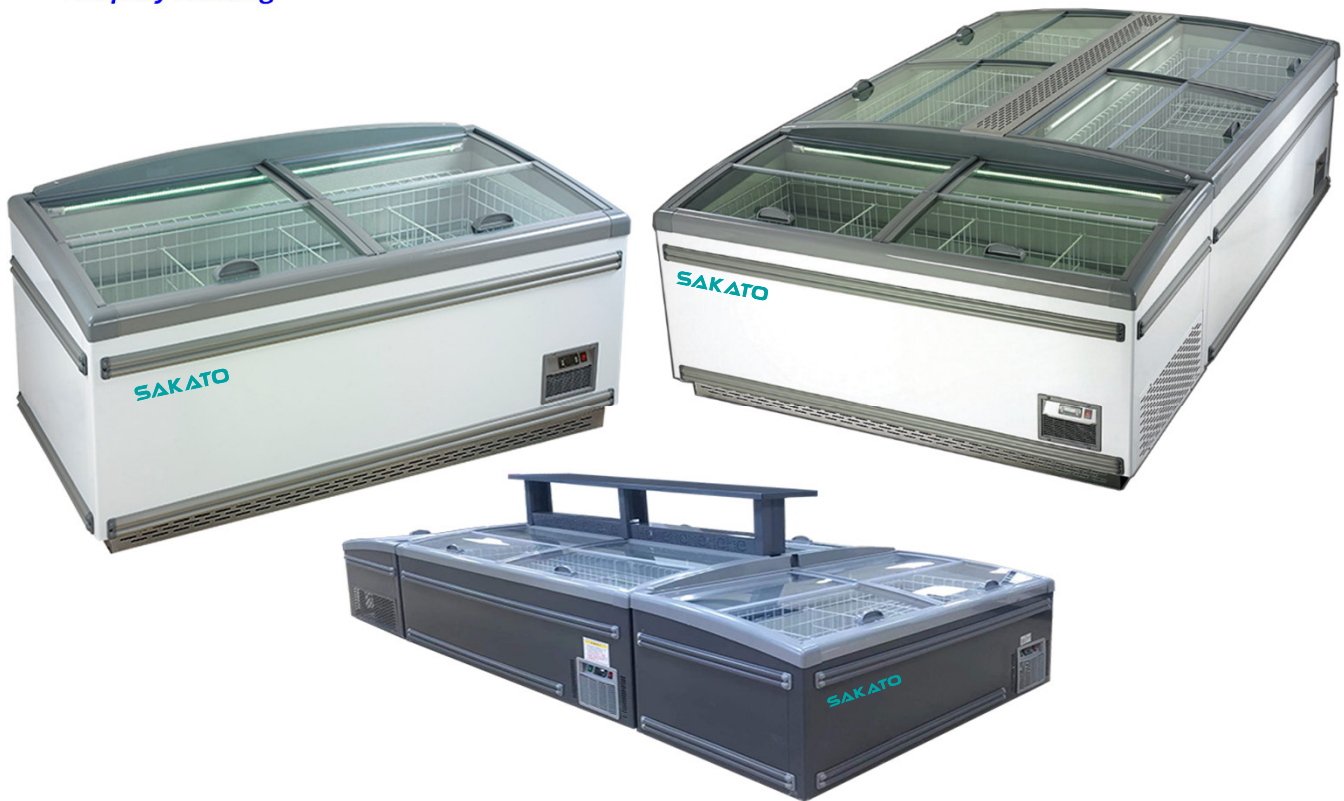
SAKATO Combined Island Freezer Showcase (Auto Defrost) (-22°C Ultra Cool)

Main Feature:

- Use high efficiency imported compressor (quick cooling, less heat & energy saving)
- New insert LED lights to impose visibility and more safety
- Sliding tempered Low-E glass door (Up to Down)
- Auto defrost system
- Adjustable inner partitioners
- Self evaporating drip tray
- Digital controller

* Optional:

~ Display racking



Energy Saving



Low Noise



Quick Cooling



Low Maintenance

Model	Capacity (L)	Temp (°C)	Refrigeration	Cooling System	Dimension
					W x D x H
SZCD – 185 SE	680 L	-18°C ~ -22°C	R290	Auto Defrost	72.80" x 34.25" x 32.00"
					1850mm x 870mm x 810mm
SZCD – 210 D	900 L	-18°C ~ -22°C	R290	Auto Defrost	82.70" x 34.25" x 34.60"
					2100mm x 870mm x 880mm
SZCD – 250 D	1050 L	-18°C ~ -22°C	R290	Auto Defrost	98.40" x 34.25" x 34.60"
					2500mm x 870mm x 880mm

SAKATO Curved Glass Door Freezer

Main Feature:

- Use high efficiency imported compressor (quick cooling, less heat & energy saving)
- New style curved sliding Low-E glass lids
- New elegant design
- Interior LED lights
- Full baskets (open type)
- Environmentally friendly
- Four caster wheels
- LCD temperature indicator

* Optional:

~ Display racking



Energy Saving



Low Noise



Quick Cooling



Low Maintenance

Model	Capacity (L)	Temp (°C)	Refrigeration	No. of basket	Cooling System	Dimension
						W x D x H
SCG – 700 – YQE	580 L	0°C ~ -20°C	R290	4	Direct Cool	65.00" x 30.00" x 33.50"
						1650mm x 760mm x 850mm
SCG – 800 – YQ	750 L	0°C ~ -20°C	R290	5	Direct Cool	78.70" x 30.00" x 33.50"
						2000mm x 760mm x 850mm

SAKATO Multideck Open Showcase (Plug-In)

Main Feature:

- Use high efficiency compressor (quick cooling, less heat & energy saving)
- Both side double tempered glass
- LED light for every self to improve visibility
- Within night curtain and price label setting
- Finned evaporator (come with on/off switch)
- Blower
- Digital controller
- Automatic drain water



Energy Saving



Low Noise



Quick Cooling



Low Maintenance

Model	Temp (°C)	Refrigeration	Compressor	Cooling System	Dimension
					W x D x H
SOCC – 900	+2°C ~ +12°C	R290	SECOP / Embraco (Single)	Blower	35.50" x 30.00" x 79.5"
					900mm x 760mm x 2020mm
SBLF – 1380	+2°C ~ +12°C	R290	SECOP / Embraco (Single)	Blower	51.60" x 31.00" x 78.75"
					1310mm x 787mm x 2000mm
SBLF – 1580	+2°C ~ +12°C	R290	SECOP / Embraco (Single)	Blower	59.00" x 31.00" x 78.75"
					1500mm x 787mm x 2000mm
SBLF – 2080	+2°C ~ +12°C	R290	SECOP / Embraco (Double)	Blower	78.75" x 31.00" x 78.75"
					2000mm x 787mm x 2000mm
SBLF – 2580	+2°C ~ +12°C	R404	SECOP / Embraco (Double)	Blower	98.40" x 31.00" x 78.75"
					2500mm x 787mm x 2000mm
SHG – 20	+2°C ~ +12°C	R22	Panasonic / Toshiba (Scroll Type)	Blower	78.75" x 33.50" x 78.75"
					2000mm x 850mm x 2000mm
SHG – 25	+2°C ~ +12°C	R22	Panasonic / Toshiba (Scroll Type)	Blower	98.40" x 33.50" x 78.75"
					2500mm x 850mm x 2000mm

SAKATO Rectangular Confectionery Showcase (Cake Showcase)

Main Feature:

- Oversized coil and low velocity fan system maintains high humidity and low temperature to remain freshness of the food
- 4 Sides tempered glass with front rectangular heated glass
- Removable and adjustable shelves with hardened glass
- Internal LED lighting for excellent visibility
- Self evaporating drip tray
- Marble base
- Blower system
- Back sliding door



Energy Saving



Low Noise



Quick Cooling



Low Maintenance

Model	Temp (°C)	Refrigeration	Cooling System	Dimension
				W x D x H
ZSF – 900 B/W	+2°C ~ +8°C	R134a	Blower	35.40" x 26.80" x 47.25"
				900mm x 680mm x 1200mm
ZSF – 1200 B/W	+2°C ~ +8°C	R134a	Blower	47.25" x 26.80" x 47.25"
				1200mm x 680mm x 1200mm
ZSF – 1500 B/W	+2°C ~ +8°C	R134a	Blower	59.00" x 26.80" x 47.25"
				1500mm x 680mm x 1200mm
ZSF – 1800 B/W	+2°C ~ +8°C	R134a	Blower	70.85" x 26.80" x 47.25"
				1800mm x 680mm x 1200mm
ZSF – 1200W – 4L (Special Order)	+2°C ~ +8°C	R134a	Blower	47.25" x 31.50" x 53.15"
				1200mm x 800mm x 1350mm
ZSF – 1800W – 4L (Special Order)	+2°C ~ +8°C	R134a	Blower	70.85" x 31.50" x 53.15"
				1800mm x 800mm x 1350mm

SAKATO Meat Display Showcase

Main Feature:

- Use high efficiency compressor (quick cooling, less heat & energy saving)
- Stylish serve over counter display showcase
- Interior LED light to improve visibility
- Digital controller
- Additional storage compartment
- Front and back door can be opened
- Self evaporating drip tray



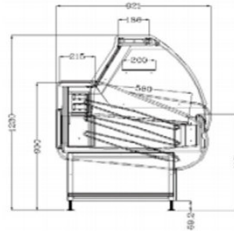
SG-20KP / SG-25KP



SG-20WS



SG-20WS



Energy Saving



Low Noise



Quick Cooling



Low Maintenance

Model	Temp (°C)	Refrigeration	Compressor	Cooling System	Dimension	
					W x D x H	
SG – 20KP	+2°C ~ +8°C	R404	Panasonic	Auto Defrost	78.75" x 43.30" x 48.40"	
					2000mm x 1100mm x 1230mm	
SG – 25KP	+2°C ~ +8°C	R404	Panasonic	Auto Defrost	98.40" x 43.30" x 48.40"	
					2500mm x 1100mm x 1230mm	
SG – 15WS	+2°C ~ +8°C	R290	Embraco/ Secop	Auto Defrost	62.60" x 37.0" x 48.40"	
					1590mm x 940mm x 1230mm	
SG – 20WS	+2°C ~ +8°C	R290	Embraco/ Secop	Auto Defrost	77.40" x 37.0" x 48.40"	
					1965mm x 940mm x 1230mm	
SG – 25WS	+2°C ~ +8°C	R290	Embraco/ Secop	Auto Defrost	102.00" x 37.0" x 48.40"	
					2590mm x 940mm x 1230mm	

SAKATO Stainless Steel Solid Door Upright Freezer

Main Feature:

- Use high performance compressor (quick cooling, less heat & energy saving)
- New elegant design with bigger display space
- Blower system (Frost free system)
- Low maintenance condenser
- Digital controller
- Locks & keys



Energy Saving



Low Noise



Quick Cooling



Low Maintenance

Model	Capacity (L)	Temp (°C)	Refrigeration	No. of shelf	Cooling System	Dimension
						W x D x H
SUF – 330 – SS	330 L	-18°C ~ -22°C	R290	4	Blower	23.60" x 24.80" x 72.80"
						600mm x 630mm x 1850mm
SUF – 550 – SS	550 L	-18°C ~ -22°C	R290	4	Blower	30.70" x 28.75" x 72.80"
						780mm x 730mm x 1850mm

SAKATO Counter Top Chiller/Freezer

Main Feature:

- Use high efficiency compressor (quick cooling, less heat & energy saving)
- Interior & exterior in stainless steel material
- CFC free refrigeration and foam
- Ventilated refrigeration compartment gives better air circulation
- Magnetic gasket can be replaced without any tools
- Electronic thermostat and digital LED temperature display for accurate control and easy reading



Energy Saving



Low Noise



Quick Cooling



Low Maintenance

Model	Temp (°C)	Refrigeration	Cooling System	Dimension
				W x D x H
SWCF – 1200FW	+2°C ~ +8°C -5°C ~ -18°C	R290	Blower	47.25" x 30.00" x 33.50"
				1200mm x 760mm x 850mm
SWCF – 1500FW	+2°C ~ +8°C -5°C ~ -18°C	R290	Blower	59.00" x 30.00" x 33.50"
				1500mm x 760mm x 850mm
SWCF – 1800FW	+2°C ~ +8°C -5°C ~ -18°C	R290	Blower	70.85" x 30.00" x 33.50"
				1800mm x 760mm x 850mm
SWCF – 2000FW	+2°C ~ +8°C -5°C ~ -18°C	R290	Blower	82.70" x 30.00" x 33.50"
				2000mm x 750mm x 850mm

SAKATO Stainless Steel Upright Chiller & Freezer (Frost Free System)

Main Feature:

- Energy efficient and powerful cooling performance
- Self-evaporation design
- Full stainless steel door design
- Digital controller



Energy Saving



Low Noise



Quick Cooling



Low Maintenance

Model	Temp (°C)	Refrigeration	No. of shelf	Cooling System	Dimension
					W x D x H
SUF – UD2 – FW	+2°C ~ +8°C -5°C ~ -18°C	R290	2	Blower	24.40" x 30.00" x 78.00"
					620mm x 760mm x 1980mm
SUF – UD4 – FW	+2°C ~ +8°C -5°C ~ -18°C	R290	4	Blower	48.00" x 30.00" x 78.00"
					1220mm x 760mm x 1980mm
SUF – UD6 – FW	+2°C ~ +8°C -5°C ~ -18°C	R290	6	Blower	71.70" x 30.00" x 78.00"
					1820mm x 760mm x 1980mm

SAKATO Stainless Steel Upright Chiller & Freezer (Direct Cool System)

Main Feature:

- New elegant design with bigger display space
- Use high performance compressor (quick cooling, less heat & energy saving)
- 2 in 1 chiller & freezer system
- Stainless steel body
- Adjustable thermostat
- Fast cooling (Direct cool system)



Energy Saving



Low Noise



Quick Cooling



Low Maintenance

Model	Temp (°C)	Refrigeration	No. of shelf	Cooling System	Dimension
					W x D x H
SUCF – UD2 DX	+2°C ~ +8°C -5°C ~ -18°C	R600a	2	Direct Cool	23.60" x 30.70" x 77.00"
					600mm x 780mm x 1960mm
SUCF – UD4 DX	+2°C ~ +8°C -5°C ~ -18°C	R600a/ R290	4	Direct Cool	47.25" x 28.00" x 77.00"
					1200mm x 715mm x 1960mm
SUCF – UD6 DX	+2°C ~ +8°C -5°C ~ -18°C	R600a/ R290	6	Direct Cool	71.25" x 28.00" x 77.00"
					1810mm x 715mm x 1960mm

SAKATO Counter Top Cooler / Warmer

Main Feature:

- Adjustable coated shelves
- Digital thermostat & temperature display
- Simple construction and high security
- Hot air blowing glass door (Anti-Fog)
- Internal LED lighting on top 2 sides
- Ventilated cooling system
- Auto defrost function
- Maintenance free



Energy Saving



Low Noise



Quick Cooling



Low Maintenance

Model	Capacity (L)	Temp (°C)	Refrigeration	Cooling System	Dimension
					W x D x H
RTW – 160L	160 L	+2°C ~ +10°C	R600a	No Frost	35.00" x 22.40" x 27.00"
					888mm x 568mm x 686mm
RTR – 160L (Warmer)	160 L	+30°C ~ +80°C	-	-	33.70" x 22.40" x 27.00"
					856mm x 568mm x 686mm
RT – 78L-3	78 L	+2°C ~ +10°C	R600a	No Frost	17.60" x 15.75" x 38.00"
					447mm x 400mm x 969mm

SAKATO Ultra Cool Freezer (-40°C)

Main Feature:

- Use high efficiency compressor (deep & quick freezing)
- Durable stainless steel inner body
- Low energy consumption
- Low maintenance
- Environment friendly refrigeration
- Smart digital controller
- Fine foam technology



Smart Digital Controller



Energy Saving



Low Noise



Quick Cooling



Low Maintenance

Model	Capacity (L)	Temp (°C)	Refrigeration	Cooling System	Dimension
					W x D x H
SF – 40 – 400	300 L	-20°C ~ -40°C	R290	Direct Cool	40.23" x 26.56" x 32.81"
					1030mm x 680mm x 840mm
SF – 40 – 600	500 L	-20°C ~ -40°C	R290	Direct Cool	52.73" x 26.56" x 32.81"
					1350mm x 680mm x 840mm
SF – 40 – 700	600 L	-20°C ~ -40°C	R290	Direct Cool	71.09" x 26.56" x 32.81"
					1820mm x 680mm x 840mm

SAKATO Premium Upright Chiller With Backdoor (8 feet Height)

Main Feature:

- New elegant design with bigger display space
- Use high efficiency compressor (quick cooling, less heat & energy saving)
- Frost free system
- Low maintenance condenser
- Self evaporating drip tray
- Digital controller
- Interior LED lights
- **Lock & Keys**
- Door hinge (self-closing)
- Adjustable shelves



Energy Saving



Low Noise



Quick Cooling



Low Maintenance

Model	Capacity (L)	Temp (°C)	Refrigeration	Cooling System	Dimension
					W x D x H
SC – D2 – 1260TCP – BD	1200 L	+2°C ~ +10°C	R290	Frost Free	49.6" x 31.5" x 94.5"
					1260mm x 800mm x 2400mm
SC – D3 – 1860TCP – BD	1800 L	+2°C ~ +10°C	R290	Frost Free	73.2" x 31.5" x 94.5"
					1860mm x 800mm x 2400mm

SAKATO Premium 2 Door Upright freezer (8 Feet height)

Main Feature:

- New elegant design with bigger display space
- Use high efficiency compressor (quick cooling, less heat & energy saving)
- Frost free system
- Low maintenance condenser
- Self evaporating drip tray
- Digital controller
- Interior LED lights
- Door hinge (self-closing)
- Adjustable shelves



Energy Saving



Low Noise



Quick Cooling



Low Maintenance

Model	Capacity (L)	Temp (°C)	Refrigeration	Cooling System	Dimension
					W x D x H
SUF-D2-1260TCP	1200L	0°C ~ -22°C	R290	Frost Free	49.6" x 30.7" x 94.5"
					1260mm x 780mm x 2400mm

SPECIAL PRODUCTS



Multideck Type Showcase (Mable Body)



Multideck Type Showcase (Custom Made) 1



Multideck Type Showcase (Custom Made) 2



2 In 1 Chiller/Freezer Showcase (Custom Made)



Square Meat Showcase



Cake Showcase Upright (Back Open)



Cake Showcase Upright (Back Open)



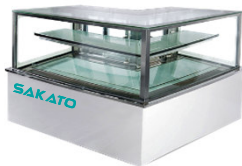
Multideck Showcase (With Glass Door) 1



Multideck Showcase (With Glass Door) 2



Cake Showcase Upright (Horizontal Arc Glass)



Cake Showcase (Angled Glass)



Cake Showcase (Horizontal Arc Glass)



Cake Showcase (Curved Front Glass)



Cake Showcase (Drawer Type)



Open Display Chiller Showcase



Ma La Steamboat Showcase



Sauce Steamboat Showcase



Buffet Steamboat Showcase



Brainmarie Cooler Work Table



Open Top Coller Showcase



Front Windows Type Combination Island Freezer (Auto Defrost)



Full Glass Door Upright Chiller



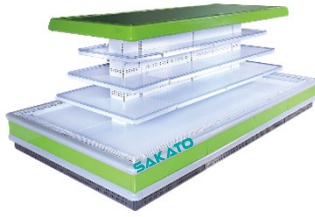
3 Door, 4 Door, 5 Door, 6 Door Outdoor Component (Split Unit) Chiller Showcase



SPECIAL PRODUCTS



Surrounding Island Showcase



Surrounding Island Showcase



Full Open Multideck Chiller Showcase (Out Door Componet Units)



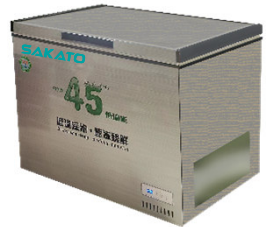
Sliding Door Chiller Showcase



-80°C Ultra Low Freezer



-65°C Ultra Low Freezer



-45°C Super Low Freezer



Premium Meat Cooler -2°C Showcase (Special For Wagyu)



-2°C Deck Top Freezer Showcase



Wine Cooler Showcase



Island Freezer Showcase

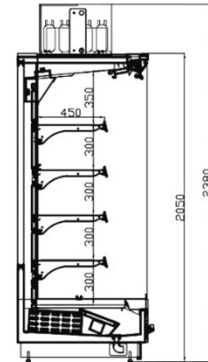


Island Freezer Showcase



Island Freezer Showcase (Large)

SPECIAL PRODUCTS



**FREEZER / CHILLER
SHOWCASE**



**PROMOTE
SHOWCASE**

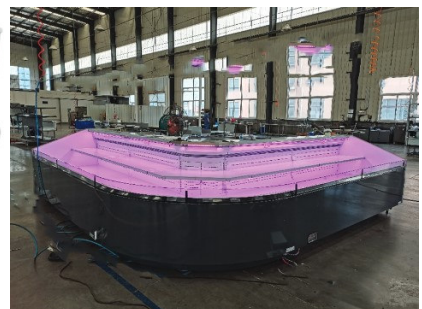
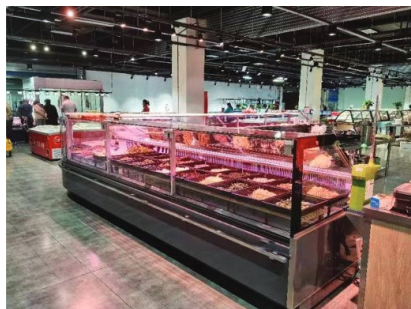


**FREEZER / CHILLER
SHOWCASE**



2 IN 1 SHOWCASE

SPECIAL PRODUCTS



**BUTCHER
SHOWCASE**



**FRESH MEAT
SHOWCASE**



**ALL TYPE OPEN ISLAND
SHOWCASE**



SAKATO

BRING YOU TO A COOL WORLD